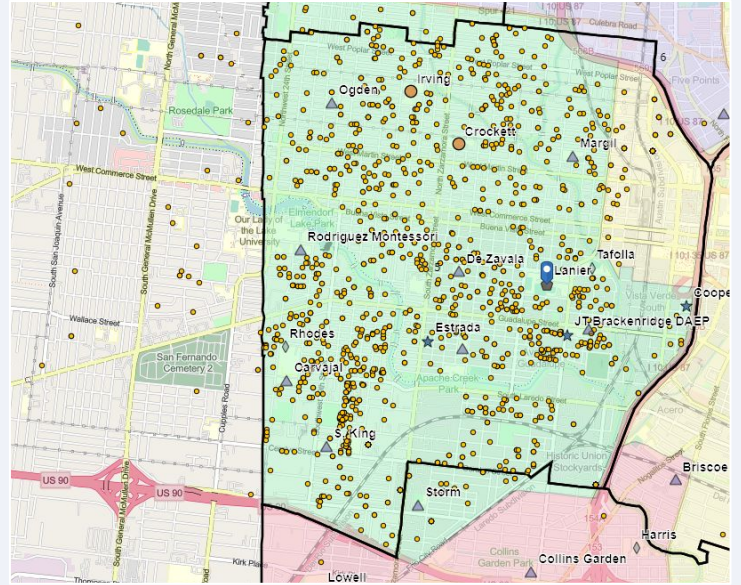


Lanier High School

SCHOOL OVERVIEW

| | |
|---------------------------|-----------------------------------------------------------------------------------------------------------------------------------------------------------------------------|
| Location: | 1514 W Cesar E Chavez Blvd San Antonio, TX 78207 |
| Grades: | 9-12 |
| Enrollment: | 1,550 |
| Poverty Index: | 75% |
| Trustee/SMD: | Torres - District 5 |
| HS Feeder Pattern: | Lanier |
| Recommendation: | <ul style="list-style-type: none"> Lanier is a comprehensive high school. Therefore, no rightsizing-related actions make an immediate impact on this school. |

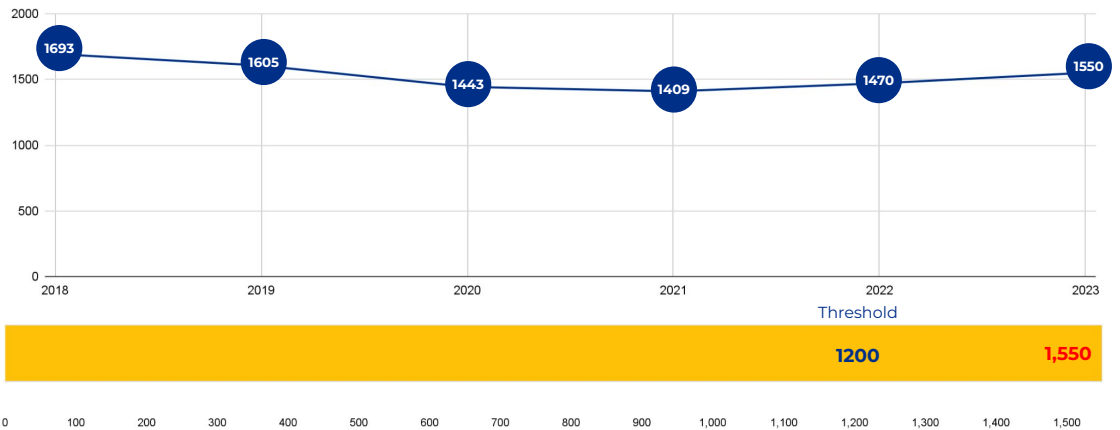


PRIMARY CRITERIA #1: 2022-23 ENROLLMENT

2023 Enrollment
1,550

Campus Type
HS

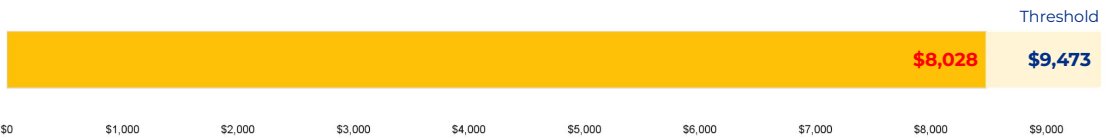
Enrollment Threshold
1,200



| | 2018 | 2019 | 2020 | 2021 | 2022 | 2023 |
|--------------------------|------|------|------|------|------|------|
| Total Enrollment: | 1693 | 1605 | 1443 | 1409 | 1470 | 1550 |

PRIMARY CRITERIA #2: FACILITY COST PER PUPIL

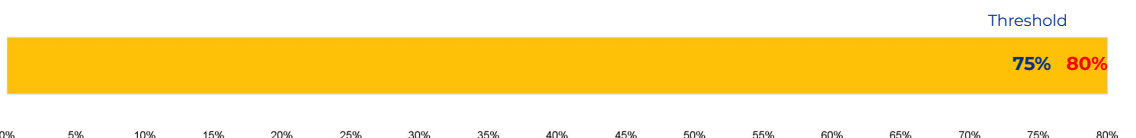
Cost Per Pupil
\$8,028



PRIMARY CRITERIA #3: 2022-23 FACILITY USE

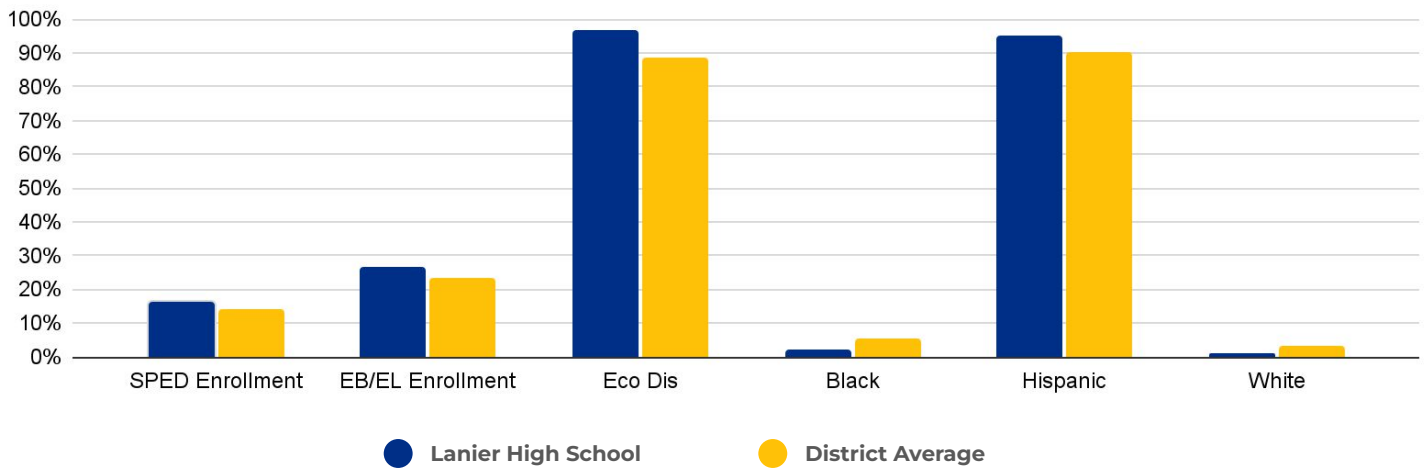
Functional Capacity
1,929

Facility Usage
80%

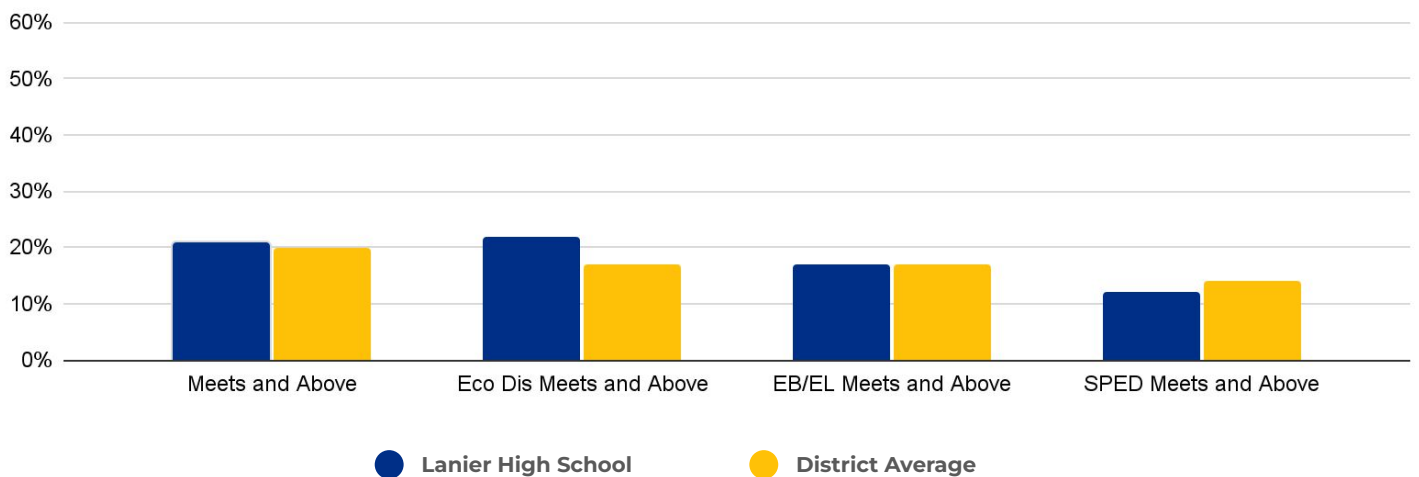


Lanier High School

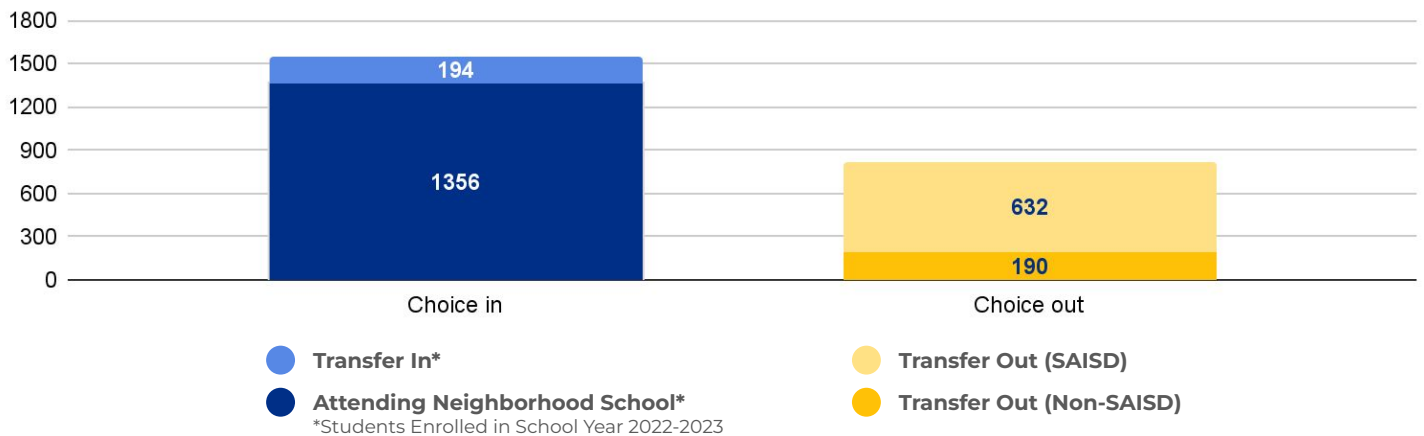
DEMOGRAPHICS



2022 ACADEMIC PERFORMANCE



2022-23 CHOICE IN / CHOICE OUT



BRIEF CRITERIA ANALYSIS

As a comprehensive high school, Lanier was not considered for rightsizing decisions.